



Electric lithium battery sprayer with 15 litre capacity and electronic control, performed effortlessly by the user. Sprayer suitable for use in large gardens.



Advantages

- Electric sprayer with 18-volt lithium battery.
- Homogeneous spraying providing higher performance (electronic control).
- Greater precision thanks to the two working position selector (herbicide and insecticide / fungicide).
- High performance with: fiberglass lance, reinforced hose and INOX handle.
- Instant start-up and stop of spraying.
- Suitable for application of products of natural origin (pelargonic, acetic, etc...).



Technical information

Technical information	EVOLUTION 15 LTC
VALVE	NO
HOSE	Reinforced PVC
STANDARD NOZZLES	Adjustable conical nozzle, low-drift fan, mirror and four holes
LANCE	Fibreglass
USEFUL CAPACITY	15 L
TOTAL CAPACITY	16 L
NET WEIGHT	3.9 Kg
SET OF NOZZLES FOR HERBICIDE AND INSECTICIDE TREATMENTS	YES
LANCE AND EXTENSIONS	Lance
STRAPS	Padded and adjustable. Adjustable in the breast strap
PRESSURE CONTROL	YES
BATTERY	18V Li-Ion
WORKING POSITIONS	2 (Herbicide/Insecticide)
AUTONOMY	180 L - 378 L
HANDLE	Stainless steel

Logistics data

Logistics data	EVOLUTION 15 LTC
CODE	8.30.85
EAN	84.14685.04008.4
CONDITIONING	1 unit
UNITS PER PALLET	21 units
DIMENSIONS PER PALLET	1200 X 800 X 1180

Functional information



Ergonomic and robust clamping nut



Stainless steel handle



Fiberglass lance



Large filling opening



Lance fasteners for easy transport



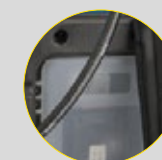
Reinforced hose



Integrated and ergonomic handle



Padded and adjustable straps with zipper



Lithium battery (18V)

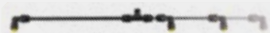


ACCESSORIES

Personalize your sprayer adapting it to your application needs (height, hard-to-reach areas...)



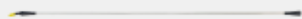
DOUBLE BUSE FLEXIBLE
Reference 8.35.40.913
5.4 M TELESCOPIC LANCE
Reference 8.35.40.915



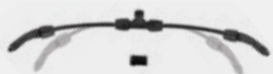
EXTENDIBLE DOUBLE NOZZLE
Reference 8.34.60.942



CONICAL HOOD
Reference 8.34.60.981
RECTANGULAR HOOD
Reference 8.34.60.980



1 M ALUMINIUM LANCE TUBE WITH COMPLETE ELBOW
Reference 8.34.60.871
1.5 M ALUMINIUM LANCE TUBE WITH COMPLETE ELBOW
Reference 8.34.60.872



FLEXIBLE DOUBLE NOZZLE
Reference 8.34.60.936



ANTI-DRIFT NOZZLE (INDUCED AIR) 80°
Reference 8.34.46.814



ANTI-DRIFT NOZZLE (INDUCED AIR) 120°
Reference 8.34.46.804



LOW-VOLUME WEED-KILLERS ELBOW
Reference 8.34.60.935



1 M FIBREGLASS LANCE TUBE WITH COMPLETE ELBOW
Reference 8.34.60.873
1.5 M FIBREGLASS LANCE TUBE WITH COMPLETE ELBOW
Reference 8.34.60.874



EXTENSION 0.5M
Reference 8.35.40.878



BATTERY EVOLUTION 15 LTC
Reference 8.30.45.816



0.25 M FLEXIBLE TUBE
Reference 8.34.60.937



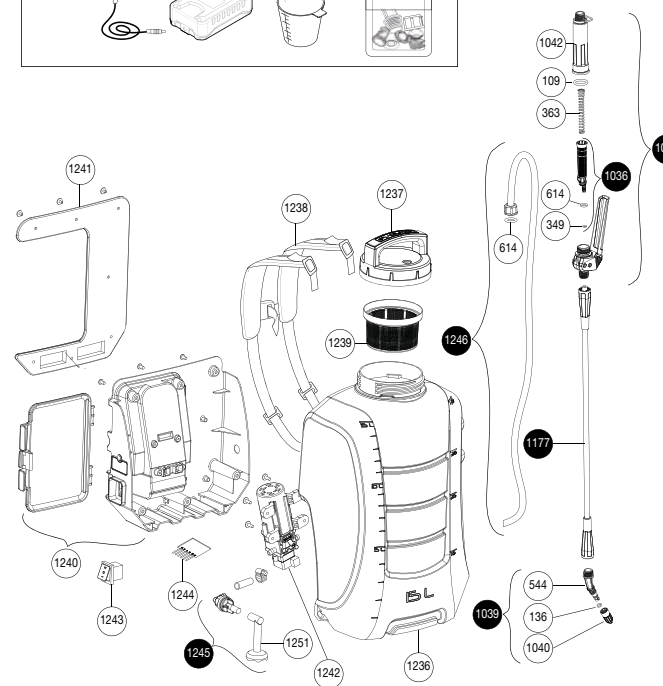
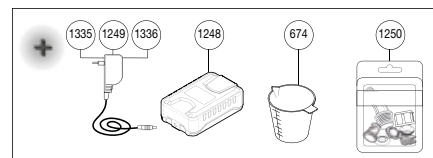
6 M HOSE
Reference 8.30.45.805



DOUBLE ADJUSTABLE NOZZLE
Reference 8.34.46.802

SPARE PARTS

Extend the service life of your sprayer easily replacing parts.



N.	COD.	Q	SPARE PARTS NAME
109	2.23.15.916	1	ROUND GASKET AN-16
136	2.23.15.905	1	ROUND GASKET AN-5
349	2.23.16.903	1	ROUND GASKET AN-3
363	8.39.41.342	1	FILTER SPRING
544	8.28.40.322	1	SPRAYER
614	2.23.16.908	2	ROUND GASKET AN-8
674	8.39.41.350	1	100 ML DOSER
1026	8.49.41.801	1	COMPLETE HANDLE
1036	8.49.41.812	1	FILTER WITH GASKET
1039	8.49.41.808	1	ELBOW WITH NOZZLE
1040	8.49.41.315	1	NOZZLE Ø 1,5
1042	8.49.41.367	1	GRIP
1177	8.18.35.627	1	545MM TUBE WITH NUTS
1236	8.30.45.301	1	TANK
1237	8.30.45.602	1	CAP
1238	8.30.45.607	1	STRAP
1239	8.30.45.302	1	FILTER
1240	8.30.45.603	1	COMPLETE TANK BASE
1241	8.30.45.804	1	BACKREST WITH SCREWS
1242	8.30.45.808	1	PUMP
1243	8.30.45.813	1	3 POSITION SWITCH
1244	8.30.45.818	1	ELECTRONIC BOARD
1245	8.30.45.605	1	ABSORPTION SYSTEM
1246	8.30.45.806	1	LTC REPLACEMENT HOSE
1248	8.30.45.816	1	BATTERY (LITHIUM-ION)
1249	8.30.45.817	1	USA-15 LTC LITHIUM-ION CHARGER
1250	8.34.46.817	1	NOZZLES SET
1251	8.30.45.329	1	Absorption filter
1335	8.30.45.831	1	USA-15 LTC LITHIUM-ION CHARGER
1336	8.30.45.832	1	UK-15 LTC LITHIUM-ION CHARGER