



Compression sprayer with 5 litre in useful capacity. Conveniently transportable with a shoulder strap.



Advantages

- Safe and no overpressure risk thanks to the safety valve
- Complete use of the liquid thanks to the lower hose connection
- Shut-off valve in FPM



Functional information



Low effort ergonomic handle



Handle for transport and pressurisation



Large funnel-shaped filling opening



Adjustable strap



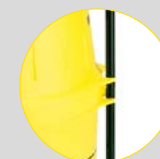
Liquid level indicator through transparent hose



Safety valve



Fibreglass lance



Lance fixers and hose for easy transport

Technical information

Technical information	INTEREKO 7
VALVE	YES
HOSE	1.15 m translucent PVC
STANDARD NOZZLES	Adjustable conical
LANCE	Fibreglass
USEFUL CAPACITY	5 L
TOTAL CAPACITY	7 L
LITRES/MIN. 1,5 BAR	0,43 l/m
LITRES/MIN. 3 BAR	0,6 l/m
NET WEIGHT	1,16kg
WIDE FILLER OPENING	YES
STANDARD ACCESSORIES	NO
LANCE AND EXTENSIONS	Lance
STRAPS	Adjustable
PRESSURE REGULATOR	NO

Logistics data

Logistics data	INTEREKO 7
CODE	8.38.63
EAN	84.14685.10071.9
CONDITIONING	4 units
UNITS PER PALLET	48 units
DIMENSIONS PER PALLET	1200 X 800 X 1100

MAINTENANCE KITS



PP MAINTENANCE KIT
Reference 8.38.05.875
Keep your sprayer at peak performance. Designed for 5-9 L sprayers.

ROUND SEAL AN-5 No. 136	2.23.15.905	
RETAINER CLAMP No. 164	8.39.02.314	
ROUND SEAL AN-30 No. 159	2.23.15.930	
CHAMBER VALVE No. 165	8.38.05.314.1	



ACCESSORIES

Personalize your sprayer adapting it to your application needs (height, hard-to-reach areas...)



3.2 M TELESCOPIC LANCE

Reference 8.35.40.913

5.4 M TELESCOPIC LANCE

Reference 8.35.40.915



DOUBLE ADJUSTABLE NOZZLE

Reference 8.34.46.802



4-HOLE NOZZLE

Reference 8.34.46.801



CONICAL HOOD

Reference 8.34.60.981

RECTANGULAR HOOD

Reference 8.34.60.980



NORMAL WEED-KILLERS ELBOW

Reference 8.34.60.934



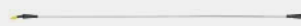
LOW-VOLUME WEED-KILLERS ELBOW

Reference 8.34.60.935



NOZZLE SET

Reference 8.34.46.815.1

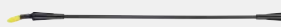


1 M ALUMINIUM LANCE TUBE WITH COMPLETE ELBOW

Reference 8.34.60.871

1.5 M ALUMINIUM LANCE TUBE WITH COMPLETE ELBOW

Reference 8.34.60.872



1 M FIBREGLASS LANCE TUBE WITH COMPLETE ELBOW

Reference 8.34.60.875

1.5 M FIBREGLASS LANCE TUBE WITH COMPLETE ELBOW

Reference 8.34.60.876



FLEXIBLE DOUBLE NOZZLE

Reference 8.34.60.936



EXTENSION 0.5M

Reference 8.35.40.878



COMPRESSION TELESCOPIC LANCE (+ADAPTER)

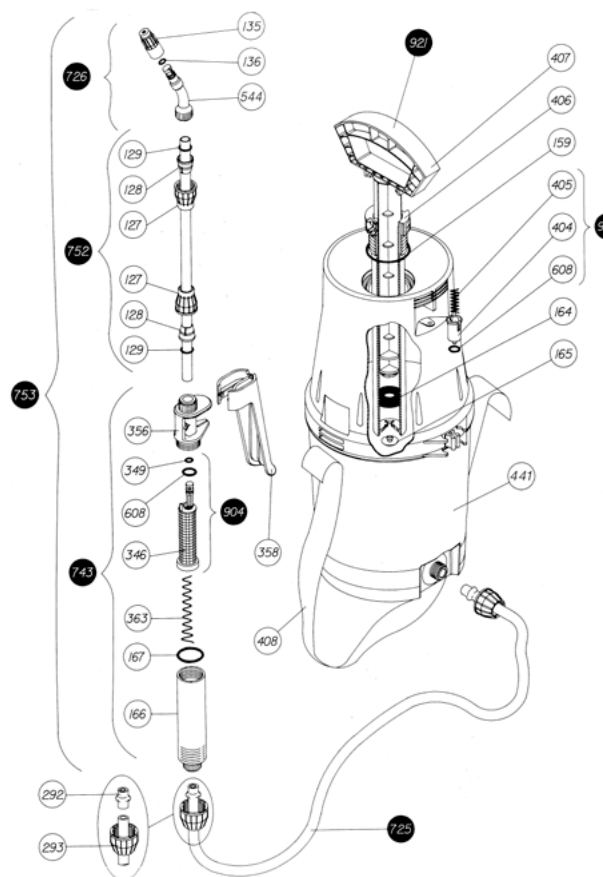
Reference 8.34.60.938

EXTENDIBLE DOUBLE NOZZLE

Reference 8.34.60.942

SPARE PARTS

Extend the service life of your sprayer easily replacing parts.



Nº	COD.	Q	SPARE PARTS NAME
127	8.38.12.323	2	CONE NUT
128	8.38.12.324	2	Ø 8 CONE
129	2.23.99.910	2	ROUND GASKET Ø 7,5
135	8.39.02.323	1	NOZZLE Ø 1
136	2.23.15.905	1	ROUND GASKET AN-5
159	2.23.15.930	1	ROUND GASKET AN-30
164	8.39.02.314	1	COLLAR SEAL
165	8.38.05.314.1	1	CHAMBER VALVE
166	8.39.18.367	1	GRIP
167	2.23.15.914	1	ROUND GASKET AN-14
292	8.38.08.328	2	HOSE BUSHING
293	8.38.12.312	2	NUT
346	8.39.47.365	1	LANCE FILTER
349	2.23.16.903	1	ROUND GASKET AN-3
356	8.39.46.366	1	HANDLE BODY
358	8.39.46.368	1	BLACK GRIP
363	8.39.41.342	1	SPRING LANCE
404	8.38.46.304	1	VALVE BODY
405	8.38.46.305	1	VALVE SPRING
406	8.38.46.303	1	CHAMBER
407	8.38.46.308	1	HANDLE
408	8.36.47.420	1	STRAP
441	8.38.63.301	1	INTEREKO-7 TANK
544	8.28.40.322	1	SPRAYER
608	2.23.16.906	2	ROUND GASKET AN-6
725	8.38.34.805	1	COMPLETE HOSE
726	8.38.08.803	1	ELBOW WITH NOZZLE
743	8.38.08.801	1	COMPLETE HANDLE
752	8.38.45.803	1	TUBE WITH NUTS
753	8.38.45.804	1	COMPLETE LANCE
904	8.39.47.811	1	FILTER WITH GASKET
921	8.38.46.601	1	COMPLETE CYLINDER
954	8.38.46.802	1	SAFETY VALVE
	8.38.63.200	1	INSTRUCTION SHEET
	8.38.63.201	1	PACKAGING